

Ethafoam® 2222

Below Screed

INSTALLATION

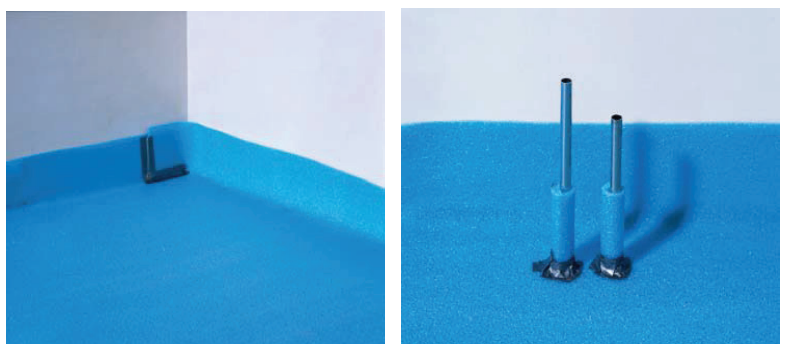
- Ethafoam® 2222 can be installed with single or double layer
- Overlap: ca. 10cm - 15cm
- In case of single layer installation it is recommended to tape the joint (not with cheap packaging tape, does not adhere)
- In case of double layer installation, the joints need to be parallel but sufficiently offset
- This information are recommendations only. The installer have the full responsibility to assure that there will be no sound bridges causes by any screed mass penetration.



A single layer can also be put side by side (edge to edge) with no overlap. Then a very careful taping with a strong adhesive tape is needed to avoid any screed mass penetration.

INSTALLATION

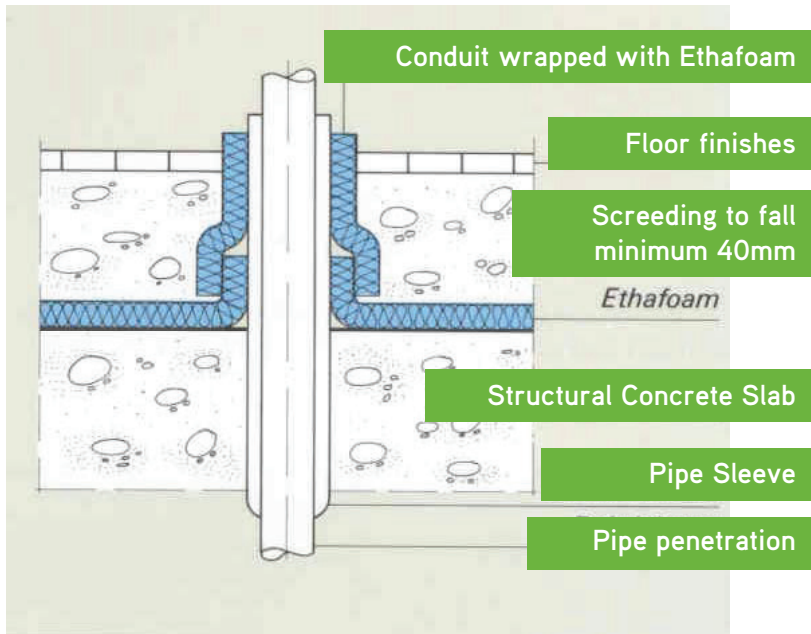
- Bend up the foam sheet at the wall.
- Edge strips are not needed and not recommended!
- Penetrating pipes are to be covered properly with Ethafoam® 2222 and need to be thoroughly taped to avoid any screed mass penetration.
- In case of liquid (self-leveling) screeds an additional PE foil needs to cover the foam.
- In case of cement screed systems an additional foil can be used. Installations without a foil will require thorough taping to avoid sound bridges. Installation at the test institute was without an additional foil.
- In general, avoid any type of sound bridges.



Ethafoam® 2222 Below Screed

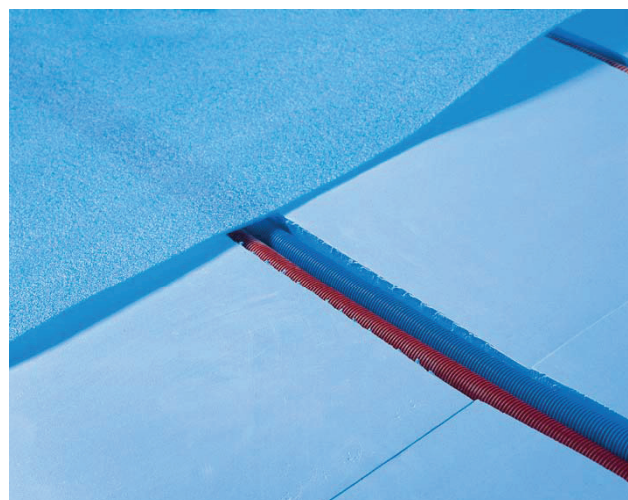
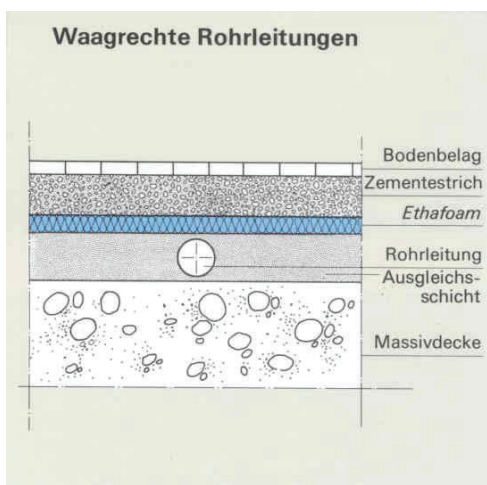
Avoiding Sound Bridges

Example of Pipe Riser



Avoiding Stress Concentrators

- Pipes or cables need to be levelled before installing impact sound insulation
- Uneven screed thicknesses on top of insulation can cause stress concentrations and cracking
- The minimum required screed thickness must be maintained at each point above impact sound insulation



Ethafoam® 2222 Below Screed

In combination with Styrofoam



Systems above the screed

